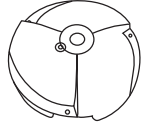


BaseFlagL

Components

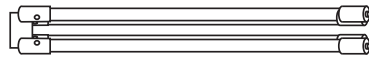
1 Base Tank



2 Pole



3 Supporter



4 Arm



A Pole Ring (x4)



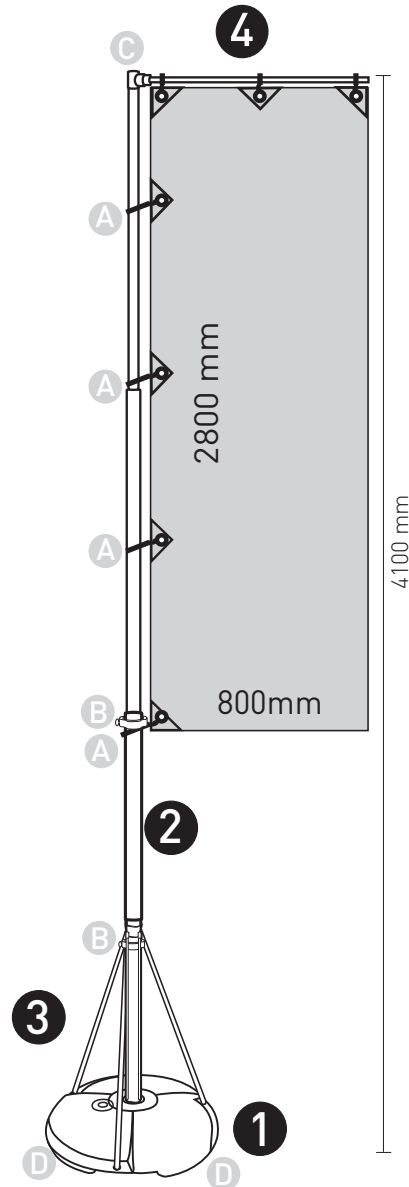
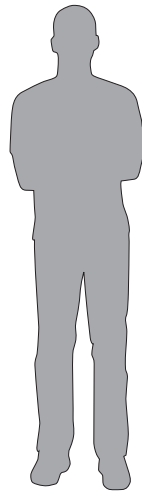
B Stopper (x2)



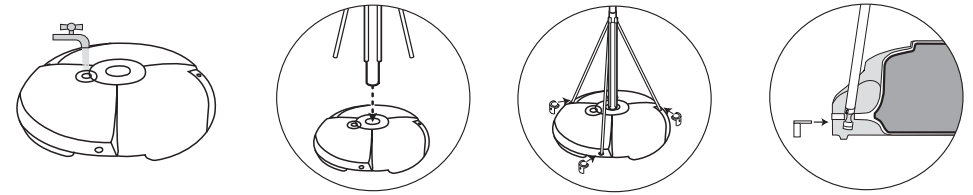
C Fixing bolt



D Snap Ring (x3)



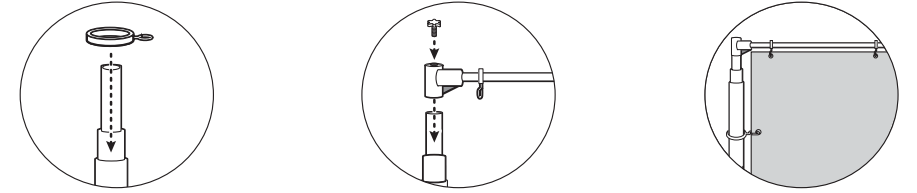
Set-Up



1. Open the tap of base tank and fill up with water.

2. Set up the pole on the center slot of the base tank.

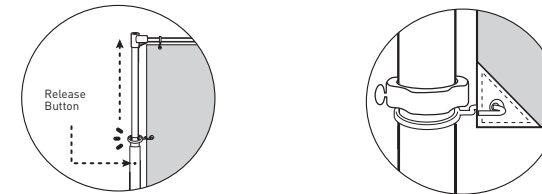
3. Insert the supporters in the corner holes of base tank and slide the snap rings.



4. Slide four rings through the pole.

5. Set the arm on the top of the pole and lock the fixing bolt.

6. Set up the flag with the rings.

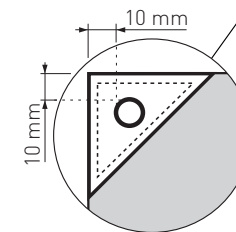


7. Release the pole and lock it with the release button.

8. Adjust the stopper to prevent the flag from rolling in wind.

Flag Design Tips

1. Seven ring holes are recommended to straighten up the flag.
2. Ring holes should be punched as shown in the dotted circle and finished with folded fabrics to avoid tear-up in strong wind.
3. The recommended size of the flag is 800x2800mm.



▲ Precautions

1. Follow the set-up instructions and use only for banner hanging.
2. Fill-up the base tank and maintain the level.
3. Empty base tank when moving.
4. Don't use in wind stronger than 14 meter/sec.
5. Slide the pole slowly when you draw it back. The rail inside the pole might broke.
6. Avoid frozen water in the base tank in winter.