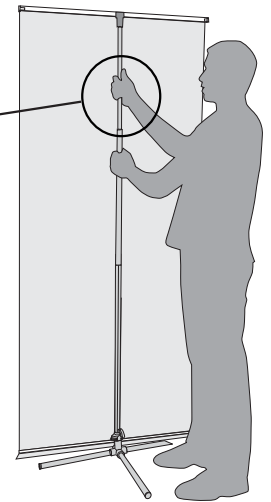
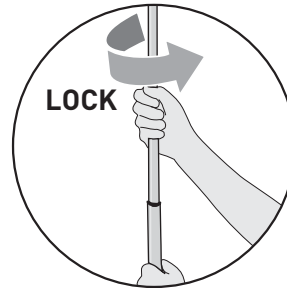
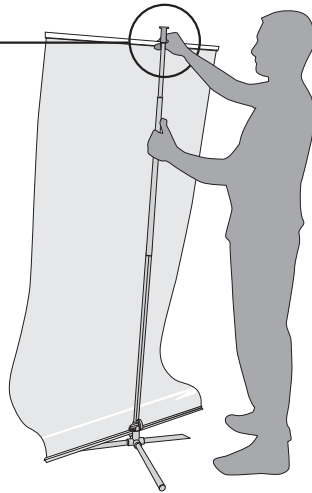
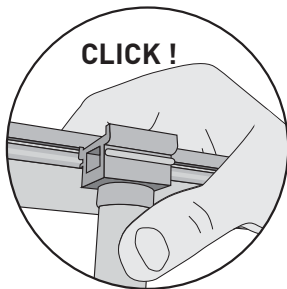
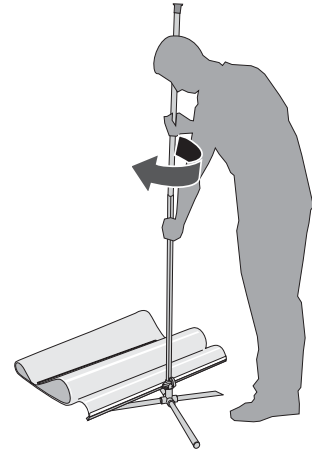
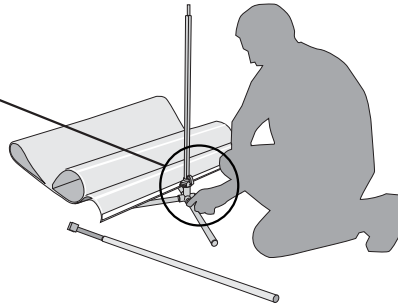
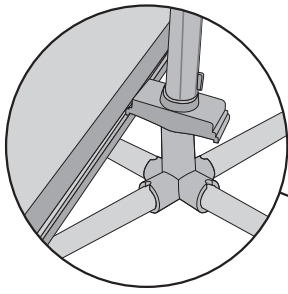


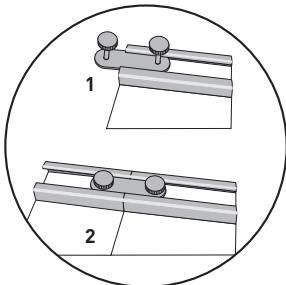
Instrucciones de montaje

Instruções de montagem / Assembly instructions

EasyBanner Neo



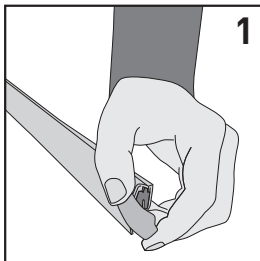
- Bloquea el mástil girando su parte superior hacia la derecha.
- Bloqueie o mastro girando a sua parte superior para a direita.
- Lock the upper pole turning right.



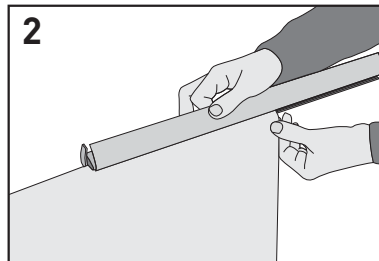
CONECTOR
PARA FORMAR MURALES
CONECTOR TO BUILD MURALS

Como colocar las impresiones

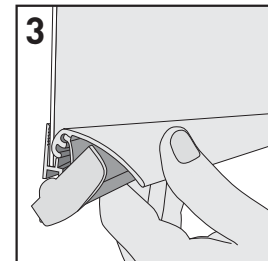
Colocar impressões / How to install your prints



- 1
- Girar los tapones de los extremos del perfil.
 - Girar as tampas dos extremos do perfil.
 - Turn the endcaps on the edge of the clamp profile.



- 2
- Abrir el perfil e insertar el poster.
 - Abrir o perfil e inserir o cartaz.
 - Open the profile and slide in the poster.



- 3
- Cerrar el perfil y colocar de nuevo los tapones.
 - Fechar o perfil e as tampas.
 - Close the profile and the endcaps.