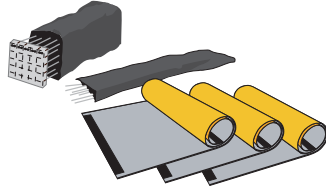


# Set-up Instructions

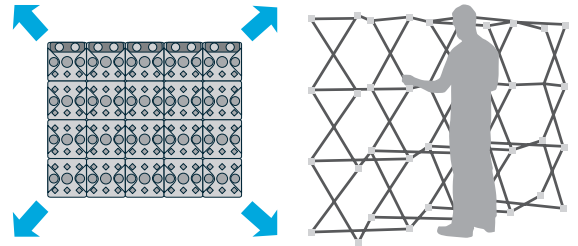
## NetUpClassic



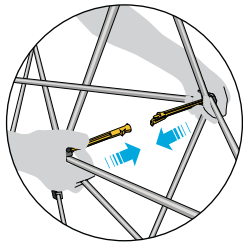
1. You will find all the needed components in the transport case.



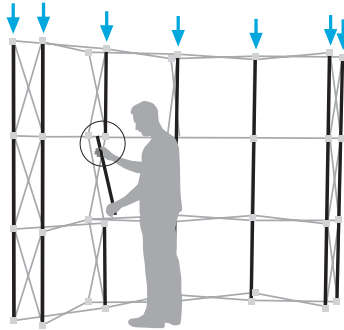
2. Remove frame, magnetic bars and the graphic panels.



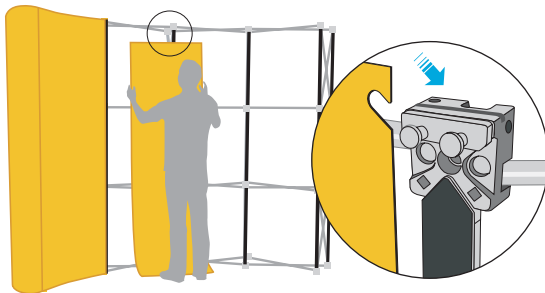
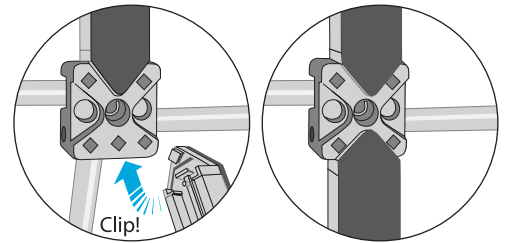
3. Place frame on the floor with hubs with graphic hangers facing up and towards you. Grasp frame scissors and lift to expand frame.



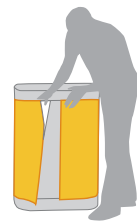
4. When frame is fully expanded, lock all the frame lockers.



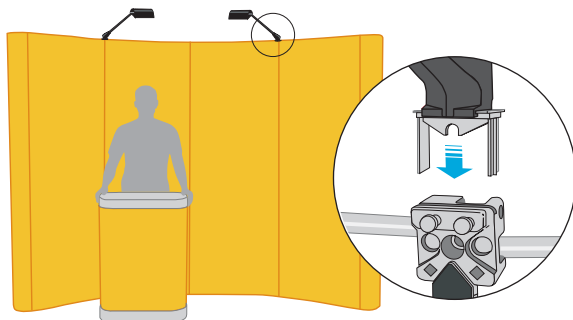
5. Apply the bars to all vertical quadrants on front side of the frame and to each end on back side of the frame. For a double sided frame, apply the bars also on the back side of the frame.



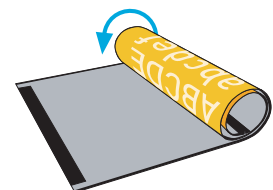
6. Hang the graphic panels on the top hub-hangers letting panels attach to magnetic bars. Do the same on both end-caps of the frame.



7. Close the transport case, put the black table top on it and attach panel around fastening the Velcro tape.



8. To place the spotlights, insert the spotlight connector on the top of the upper hubs.



**VERY IMPORTANT:** Remember to roll the graphic panels with the printed side outwards.

**ATTENTION:** OPEN AND CLOSE THE FRAME SLOWLY. WHEN CLOSING IT, CHECK IF ALL THE LOCKERS ARE OPEN.

In case of rupture, immediately contact your distributor, the system is easy to repair.