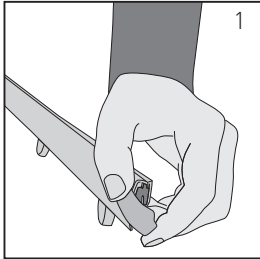


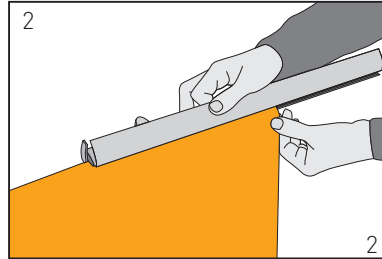
# Instrucciones de montaje

Instruções de montagem / Assembly instructions

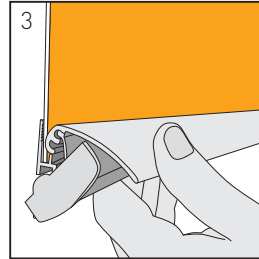
## PosterClip



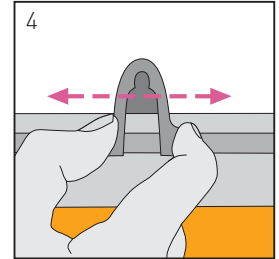
- Girar los tapones de los extremos del perfil.
- Girar as tampas dos extremos do perfil.
- Turn the endcaps on the edge of the clamp profile.



- Abrir el perfil e insertar el poster.
- Abrir o perfil e inserir o cartaz.
- Open the profile and slide in the poster.



- Cerrar el perfil y colocar de nuevo los tapones.
- Fechar o perfil e as tampas.
- Close the profile and the endcaps.



- Ajustar la posición de los colgadores.
- Ajustar a posição dos penduradores.
- Adjust the position of the hangers.

